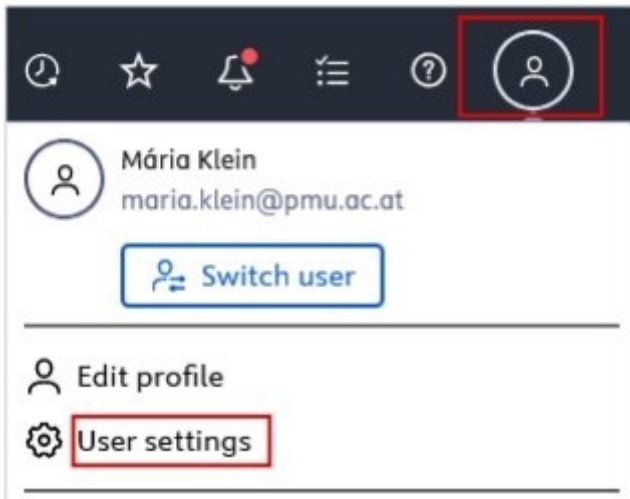


2.4. Trusted Users

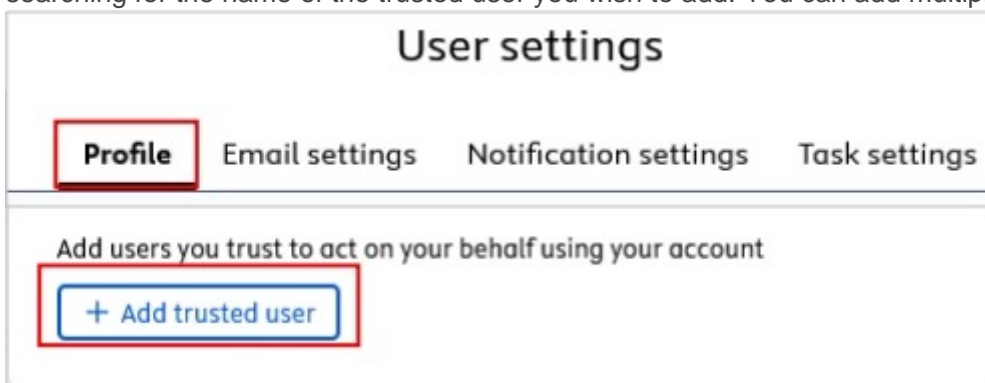
Trusted users have **full access** to the profile of the user who added them as a trusted user. A trusted user has the ability to assume control of your user account and perform all the tasks that you can within PURE, except for controlling other accounts with a trusted user status.

To add a trusted user:

1. Click on *Profile menu* in the header and select *User settings*:



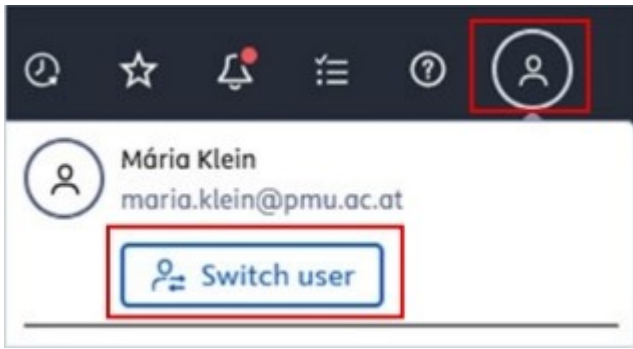
2. Select *Profile* and navigate to *Trusted Users*. Then click on the *Add trusted user* button. Begin searching for the name of the trusted user you wish to add. You can add multiple trusted users.



3. Click on *Save*.

Even if you add trusted user(s), you can still monitor any changes they make. These alterations are recorded in the *Comments and History* panel.

A trusted user can switch between their own profile and the profile of the user who added them as a trusted user by clicking on the *Switch user* button:



To remove a trusted user, click the x next to the trusted user's name.

Revision #2

Created 2025-09-17 06:37:38 UTC by maria.klein

Updated 2025-09-17 07:11:15 UTC by maria.klein